

# Harbor LA Community Plans Update

## Environmental Impact Report – Scoping Meeting

*Presentation by:*  
Impact Sciences

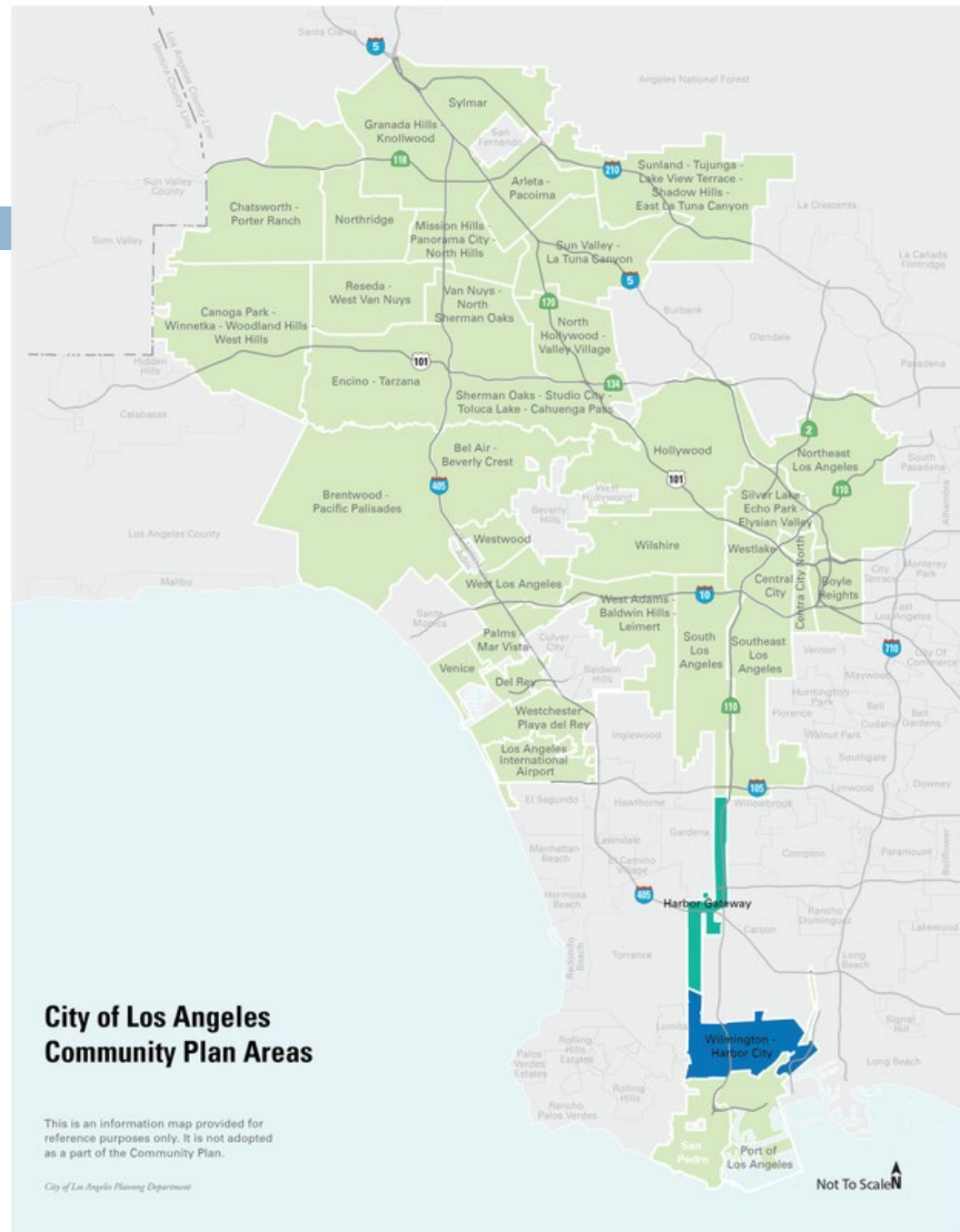
# Scoping Meeting Format

- What is a Community Plan?
- Overview of the Community Plan Update Process
- Overview of the California Environmental Quality Act
- Summary of topics in the environmental document
- Next steps



# Overview: Community Plans

- 35 Community Plan Areas throughout the City
- Establish goals and policies to guide future land use
- Accommodate forecasted jobs, housing, and population growth



# What is a Community Plan?



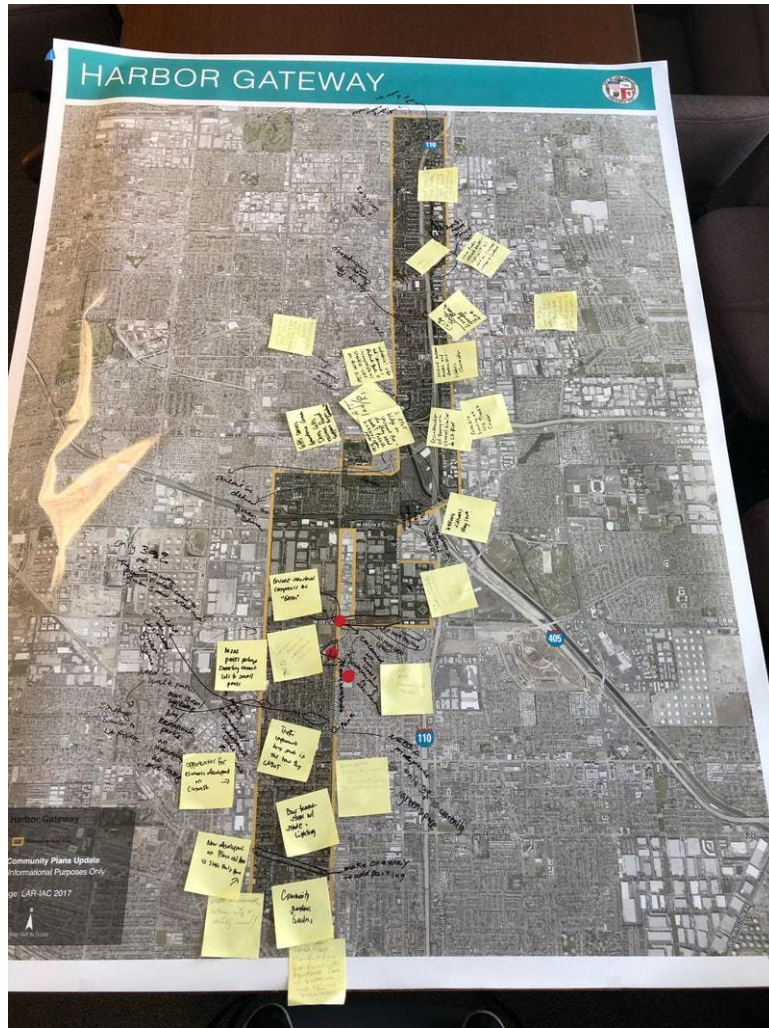
Watch video at: [www.harborlaplans.org](http://www.harborlaplans.org)

# Harbor LA Community Plan Areas

- ❑ Harbor Gateway Community Plan
  - Last updated: 1995
  - Population: 40,232 (2014)
  - Size: 5.1 sq. miles
  
- ❑ Wilmington-Harbor City Community Plan
  - Last updated: 1999
  - Population: 83,636 (2014)
  - Size: 10.2 sq. miles




# Community Outreach



## RESIDENCIAL RESIDENCIAL

POLICIAS, ISSUES, AND OPPORTUNITIES  
POLITICAS, CUESTIONES Y OPORTUNIDADES



**Place a sticker next to what is most important to you.**  
*Coloque una pegatina al lado de lo que es más importante para usted.*

**Provide safe, secure, and affordable family housing at higher densities**  
*Proporcionar viviendas familiares que son seguras y asequibles y en densidades más altas*

**Ensure that new housing opportunities minimize displacement of residents, and provide low and moderate income housing**  
*Asegurar que las oportunidades de viviendas nuevas minimicen el desplazamiento de los residentes y proporcionen viviendas de ingresos bajos y moderados*

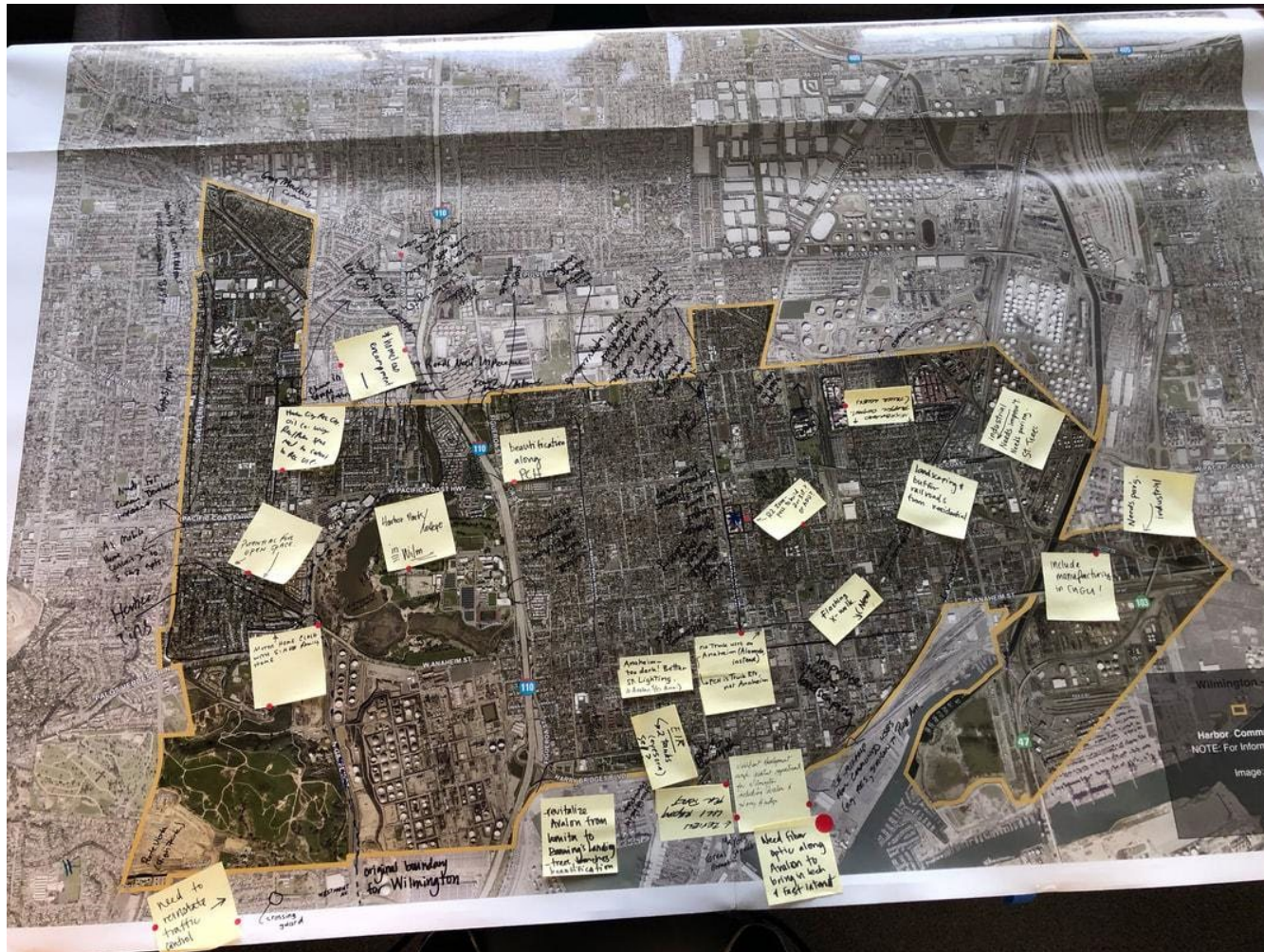
**Locate higher residential densities near commercial centers and major transit routes to reduce vehicular trips and increase accessibility to services, facilities, and employment**  
*Localizar áreas residenciales de densidad más alta cerca de centros comerciales y rutas de tránsito principales para reducir los viajes en vehículos y aumentar la accesibilidad a servicios, instalaciones y empleo*

**Preservation and enhancement of the positive characteristics of existing residential neighborhoods while providing a variety of housing opportunities with compatible new housing**  
*Preservar y mejorar las características positivas de los vecindarios residenciales existentes y al mismo tiempo brindar una variedad de oportunidades de viviendas nuevas que son compatibles*

**New development should provide architectural compatibility and landscaping to protect the character and scale of existing residential neighborhoods**  
*Proyectos nuevos deben tener arquitectura y paisajismo compatible para proteger el carácter y la escala de los vecindarios residenciales existentes*

**Uses that are not permitted by current regulations but are compatible and are a recognized part of a neighborhood should be allowed to continue with additional regulations (e.g., "Mom and Pop" neighborhood stores)**  
*Usos que no están permitidos por las regulaciones actuales pero son compatibles y son una parte reconocida de un vecindario (por ejemplo, tiendas) se debe permitir que permanezcan bajo regulaciones adicionales*

# Community Outreach

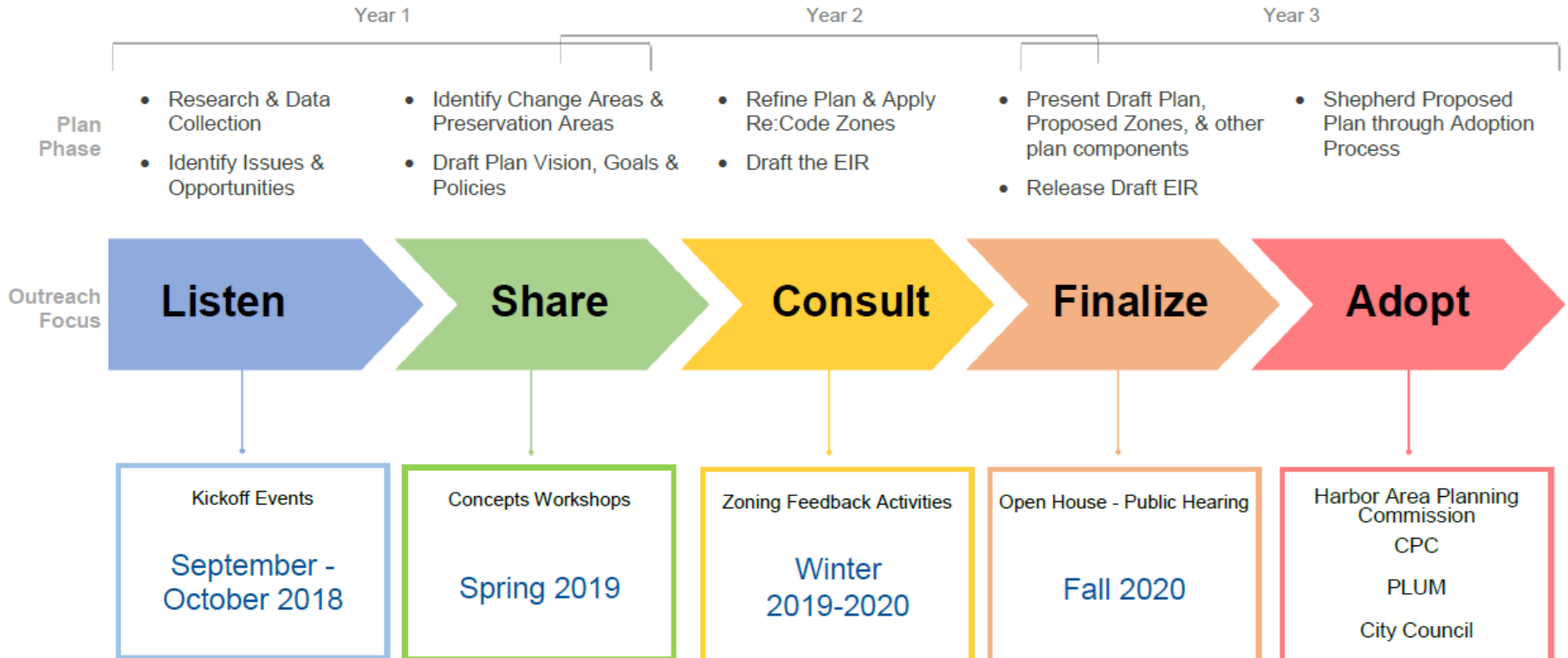




# Harbor LA Community Plans: HARBOR GATEWAY | WILMINGTON-HARBOR CITY

UPDATED August 2019  
[harborlaplans.org](http://harborlaplans.org)

## OUTREACH PLAN





# Project Objectives

- ❑ Maintain existing single- and multi-family residential uses.
- ❑ Address housing need and minimize displacement.
- ❑ Create new commercial areas in select locations.
- ❑ Encourage mixed-use and equitable transit-oriented development.
- ❑ Address environmental justice concerns and incompatible land use patterns.
- ❑ Improve visual character of industrial districts.
- ❑ Coordinate with anticipated changes at Ports.
- ❑ Protect existing open space and increase access to outdoor amenities.



# Introduction to CEQA

- Enacted by the State Legislature in 1970
- Governed by:
  - The Statute
  - The Guidelines
  - The Court



# Purpose of CEQA

- Inform decision makers and the public about potentially significant environmental effects
- Identify mitigation measures to avoid or substantially reduce harm to the environment when feasible
- Prevent significant avoidable damage to the environment by requiring changes in a project either through mitigation measures or project alternatives
- Provide responsible and trustee agencies, organizations, and the general public with the opportunity to comment on environmental issues
- Disclose the reason for approval even when there are significant effects



# CEQA Applies:

- CEQA is triggered when a project may cause a direct or potential indirect change in the environment and:
  - Is an activity directly undertaken by a government agency
  - Is an activity financed in whole or part by a government agency
  - Is a private activity which requires approval from a government agency



# CEQA Scope

20 Environmental factors listed in Appendix G of the CEQA Guidelines

- Aesthetics
- Agriculture & Forestry Resources
- Air Quality
- Biological Resources
- Cultural Resources
- Energy
- Geology / Soils
- Greenhouse Gas Emissions
- Hazards & Hazardous Materials
- Hydrology / Water Quality
- Land Use / Planning
- Mineral Resources
- Noise
- Population / Housing
- Public Services
- Recreation
- Transportation
- Tribal Cultural Resources
- Utilities / Service Systems
- Wildfire



# Types of Impacts

- **No Impact:** the project would not affect the resource area in any way
- **Less than significant impact:** impact does not exceed the CEQA defined threshold of significance
- **Less than significant impact with mitigation:** impact exceeds the threshold but can be reduced with the application of mitigation measures
- **Significant and unavoidable impact:** impact exceeds the CEQA defined threshold of significance and cannot be mitigated



# Analysis

- Thresholds based analysis
  - CEQA significance thresholds contained in Appendix G of CEQA Guidelines
- Short term impacts
  - Construction
- Long term impacts
  - Operation
- Cumulative impacts
- Alternatives



# Scope of the EIR

- City is preparing a program EIR to assess the potential effects of the update to the CPAs.
- An EIR is a first-tier environmental analysis that provides foundation for subsequent project or site-specific environmental reviews for individual projects.



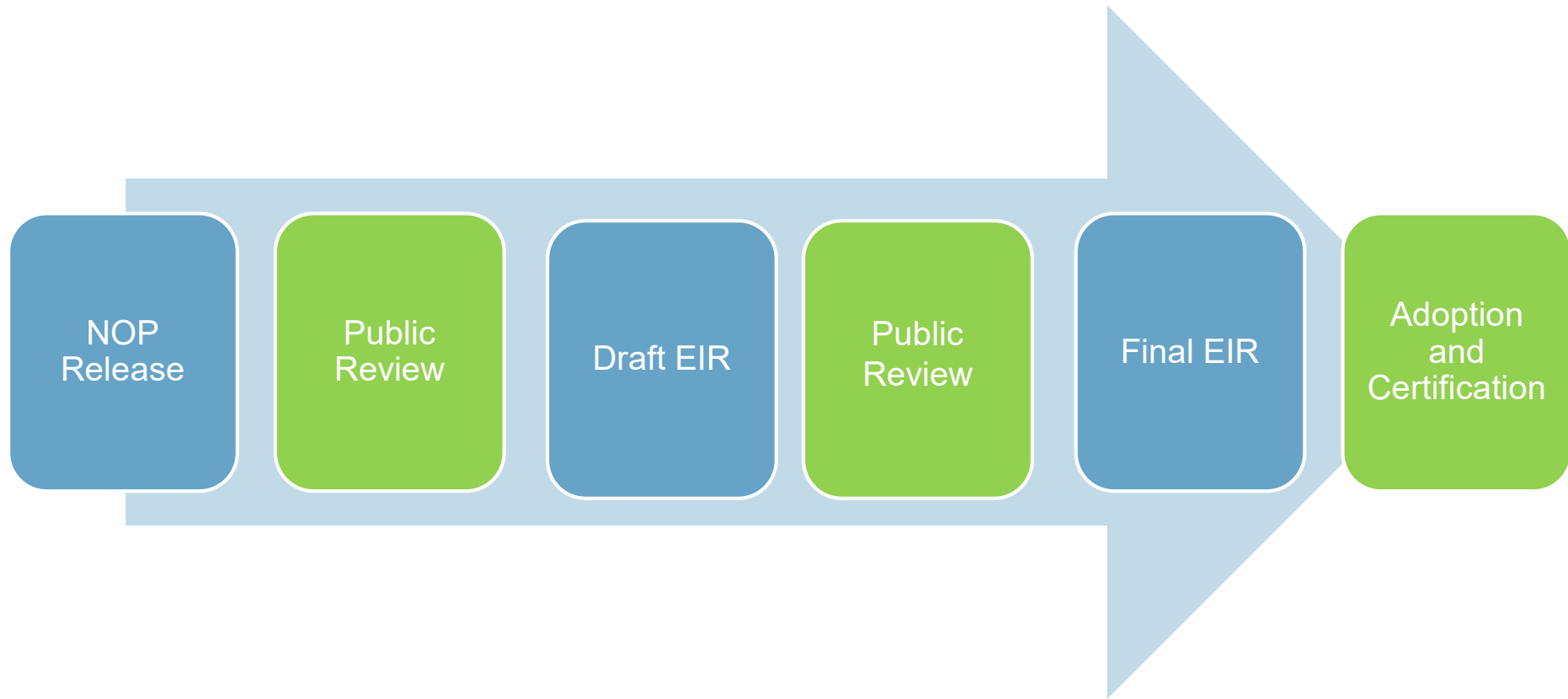
# Scope of the EIR

The following topic areas will be analyzed in the Draft EIR:

- Aesthetics
- ~~Agriculture & Forestry Resources~~
- Air Quality
- Biological Resources
- Cultural Resources
- Energy
- Geology / Soils
- Greenhouse Gas Emissions
- Hazards & Hazardous Materials
- Hydrology / Water Quality
- Land Use / Planning
- Mineral Resources
- Noise
- Population / Housing
- Public Services
- Recreation
- Transportation
- Tribal Cultural Resources
- Utilities / Service Systems
- ~~Wildfire~~



# CEQA Process



# EIR Scoping Discussion

- What environmental issues should be analyzed in the EIR (i.e. known local issues or concern);
- What alternatives to the project should be evaluated (i.e. no project, different project); and
- What mitigation measures should be considered to help avoid or minimize significant impacts?



# Public Participation

- ❑ 30-day comment period:  
August 15 to September 16
  - Oral and written comments must be received by 5:00 PM on Monday, September 16
  
- ❑ [www.harborlaplans.org](http://www.harborlaplans.org)
  - Information, contacts, updates on the Community Plans



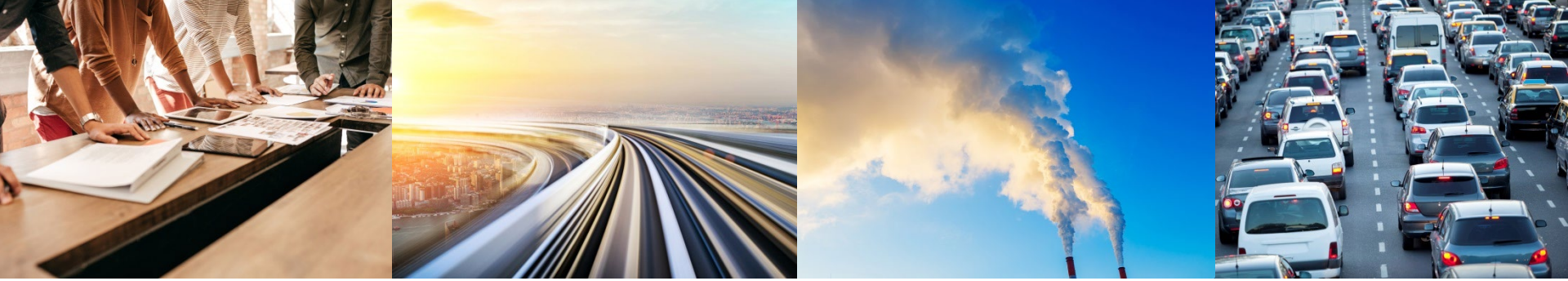
# Public Participation

- ❑ **Submit comments today.**
  - ⇒ Turn in comment sheets at the sign-in table.
  - ⇒ Provide oral comments.
  
- ❑ **Submit comments by mail to:**

City of Los Angeles, Department of City Planning  
Harbor LA Community Plans  
200 North Spring Street, Room 667  
Los Angeles, CA 90012
  
- ❑ **Submit by email to:**

[marie.cobian@lacity.org](mailto:marie.cobian@lacity.org)





## ORAL COMMENTS:

Please join us at the back of the room to provide your comments.



THANK YOU!